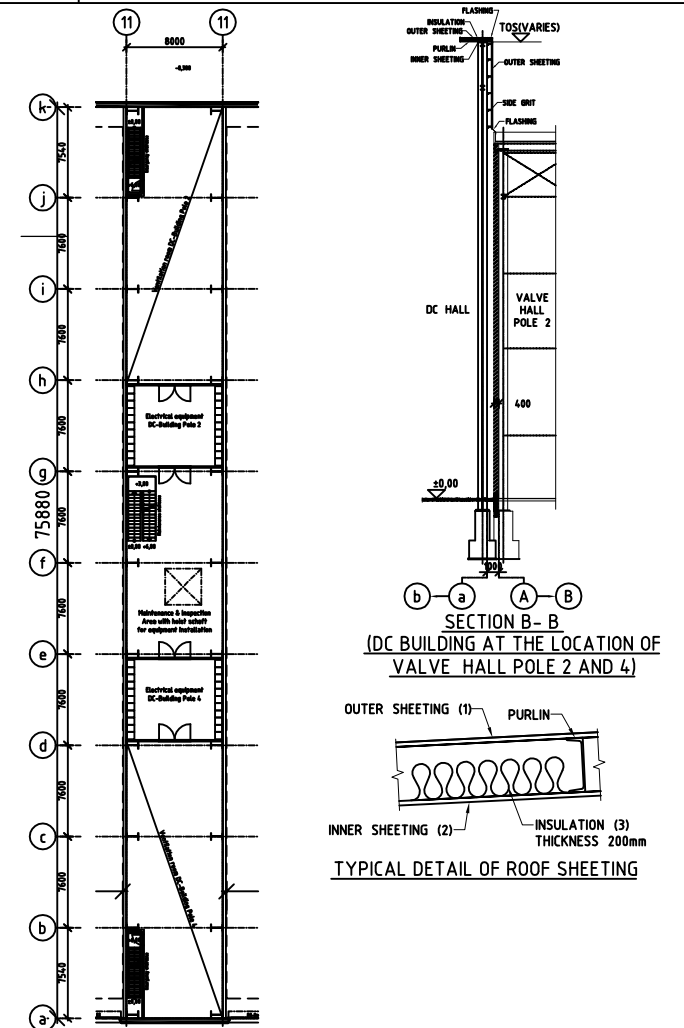
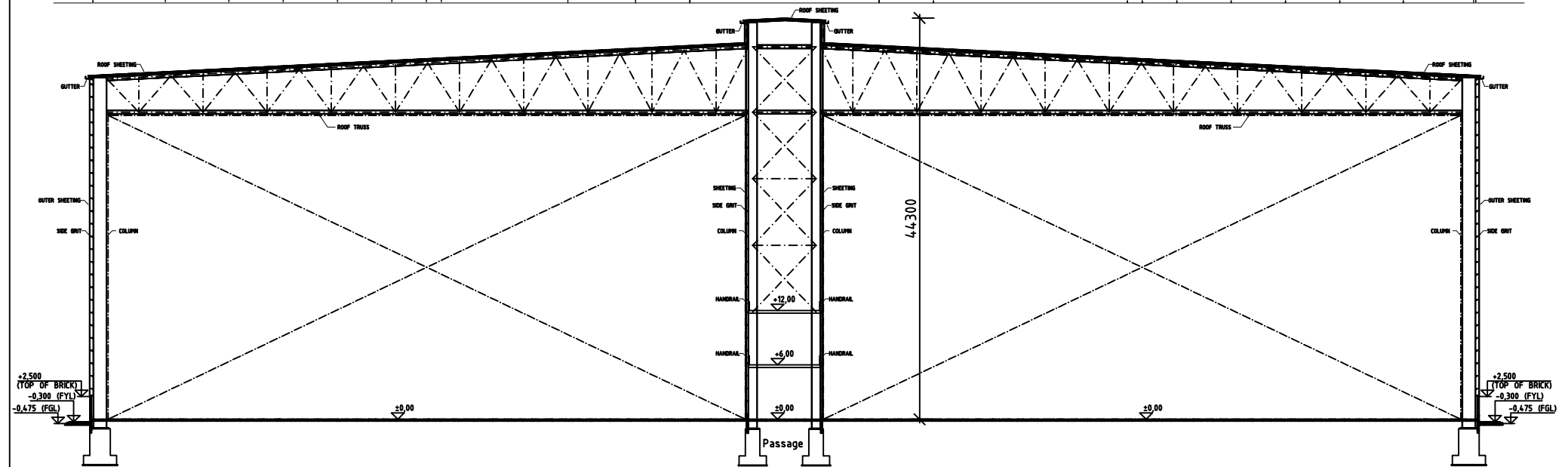


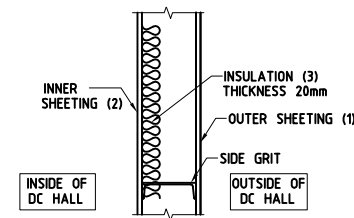
DETAIL B, DC-BUILDING FIRST FLOOR



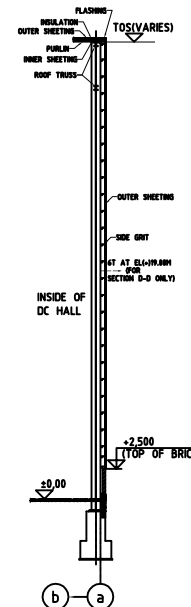
- LEGEND**
1. OUTER SHEETING : MS SHEET HAVING TROUGHED ZINC ALUMINIUM ALLOY HOT DIP COATED (BOTH SIDES TOGETHER 200GM/SQ.M) HAVING 0.6MM MINIMUM THICKNESS (OR HIGH TENSILE STEEL SHEET OF 0.5MM MINIMUM THICKNESS) EXPOSED SURFACE WITH PVF2 COATING (20 MICRONS DFT) OVER CORROSION INHIBITIVE PRIMER; THE INTERIOR SURFACE SHALL BE COATED AS PER MANUFACTURER'S STANDARD. PAINTS SHALL BE FACTORY APPLIED AND OVEN BAKED. STANDING SEAM SHEET FIXED WITH CLIP LOCK SYSTEM SHALL BE USED.
 2. INNER SHEETING : MS SHEET HAVING TROUGHED ZINC ALUMINIUM ALLOY HOT DIP COATED (BOTH SIDES TOGETHER 150GM/SQ.M) HAVING 0.6MM MINIMUM THICKNESS (OR HIGH TENSILE STEEL SHEET OF 0.5MM MINIMUM THICKNESS) EXPOSED SURFACE WITH PVF2 COATING (20 MICRONS DFT) OVER CORROSION INHIBITIVE PRIMER; THE INTERIOR SURFACE SHALL BE COATED AS PER MANUFACTURER'S STANDARD. PAINTS SHALL BE FACTORY APPLIED AND OVEN BAKED.
 3. INSULATION : MINERAL WOOL INSULATION CONFORMING TO IS:8183 HAVING A DENSITY OF 32KG/CUM FOR GLASS WOOL OR 48KG/CUM ROCK WOOL OF THICKNESS AS PER DETAIL.



SECTION A-A, DC-BUILDING



TYPICAL DETAIL OF WALL SECTION



SECTION C-C (AS DRAWN)
SECTION D-D (AS DRAWN AND NOTED)
SECTION E-E (OPP. HAND)

THIS MEASUREMENT IS 100 mm ON ORIGINAL DRAWING
IF NOT 100 mm ON THIS COPY, ADJUST SCALES ACCORDINGLY.

PRELIMINARY DRAWING

POWER GRID CORPORATION OF INDIA LIMITED
(A government of India Enterprise)

**±800 kV 6000 MW HVDC Multi Terminal
NER/ER - NR/WR Interconnector-I**

New Delhi
Agra
Biswanath Charai
Alipurduh

ABB
ABB AB
S-771 80 LUDVICA, Sweden
Telephone: +46 240 782000

BHARAT HEAVY ELECTRICALS LTD.
TRANSMISSION PROJECTS DIVISION

Civil and Building Works incl EL. and Mech. Services.

ABB'S CONSULTANT
**FICHTNER Consulting
Engineers (India)
Private Limited**
Chennai.

AGRA CONVERTER STATION
DC BUILDING
POLE 4 AND 2
MAIN DIMENSIONS AND LAYOUT

Date: 2012-06-12
Drawn by: NAR
Checked by: RMB
Scale (A1-Print): 1:1
Drawing No.: 3-73-001
Rev: R0